

Holmes Chapel in lockdown

Where can you find these historical land marks in Holmes Chapel? Do you know their history?



Macclesfield Road
Mill stone positioned in the wall of a garden.



The Hermitage bridge over the River Dane. Initials of Thomas Bayley Hall, the last member of the Hall family living at the Hermitage(died 1828) He paid for much of the building around Holmes Chapel.



Small garden next to the library. Commemorative stone bearing the words of the Millenium Resolution.



Macclesfield Road
Home of a salt smuggler.
Has date of 1764, also TBH initials.



The Square, Holmes Chapel.
Above Latham estate agents.
Thomas Bayley Hall initials.



Cottages behind St Luke's Church. During a fire in July 1753, these along with St Luke's Church and the Red Lion were the only buildings remaining out of the 19 buildings in the village at that time.

Thank you to the young people, as well as the 'young at heart' for giving us some smiles, and possible additional exercise! as houses, windows and gardens have been decorated as a way of brightening us all and saying Thank you to the NHS.



From which time in history does this game originate?
Roman Empire



What is the name of this elephant? Which author wrote these children's books?
Elmer. David McKee



The colours of the rainbow can be seen throughout our village. 'Somewhere over the rainbow' is a famous song from which film?
The Wizard of Oz

Where can you spot these whilst you are out and about or are they already familiar sights to you?



Gate on
The Hermitage



Front of the Hermitage
primary school



By the River Dane, in the
open meadow area
opposite the newly
planted trees.



Above Dale's shop,
Macclesfield Road



Entrance to the
car wash on
Macclesfield
Road



Side wall of Charlie's
Juice Bar, 19a The
Square.

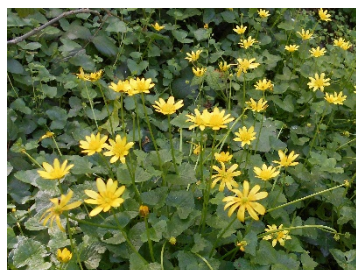


Front garden of the house
next to The Vicarage hotel.



Junction of
Westmorland Terrace, /
Sadlers Close.

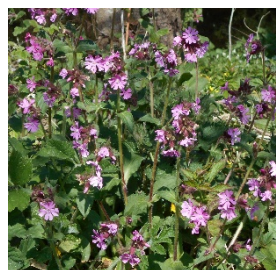
Some of the tree blossom and wild flowers growing in abundance in the Dane Meadow, can you name them?



celandines



Wild garlic



Red / pink campion

Blue bells



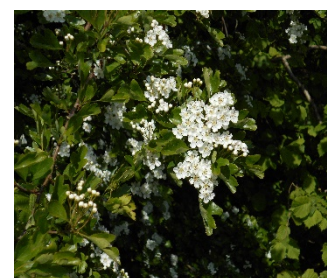
dandelion



Archangel (lamium)



Mayflower (smock)



hawthorn

These birds have all been spotted or heard from gardens or on walks during 'lock down'. Have you seen or heard the same ones? Have fun with the anagrams!



goldfinch	Blue tit	chaffinch	chiffchaff
Great tit	Green finch	robin	Black bird

Butterflies have been keeping us company in our gardens and on our walks



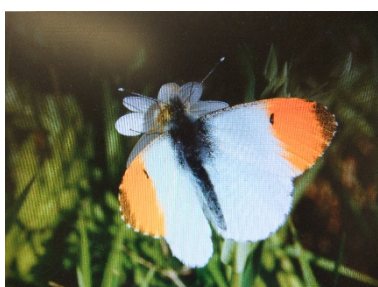
Gate keeper



tortoiseshell



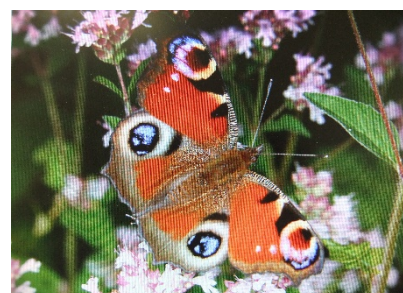
Small white



Orange tip

Can you match the butterflies?

Tortoiseshell
Peacock
Orange tip
Gate keeper
Small white



peacock

And finally, how many of these roads in Holmes Chapel have you walked along?

Waters of the Blue Bird Coniston Drive
Patron Saint of Scotland St Andrew's Drive
King Canute's namesake Knutsford Road
Adam and Eve's garden Eden Drive
Roasting over an open fire Chestnut Drive
Made by Brunel Iron bridge Drive
A small land holding Crofter's Court
This shape has four sides all the same length The Square