



# Holmes Chapel Partnership Community Newsletter Issue 64: December 2019

## IT'S CHRISTMAS MARKET TIME!

St Luke's Church bells will start ringing at 3.45pm and The Laura Wilson School of Dance opens the proceedings at 4pm.

It may be Sunday afternoon but Holmes Chapel will be buzzing! Get into the mood listening to the fairground organ. Browse around the stalls outside and inside St Luke's Church Hall and in the Scout Headquarters – the perfect opportunity to buy Christmas gifts or simply treat yourself! And to keep you going a selection of seasonal food and drink.

A visit to Father Christmas and a chance to look round the Fire Station tick the boxes for our younger visitors, not to mention the chance to perform for the Christmas crowds.



Photo by Marie Bennett

## ENTERTAINMENT SCHEDULE

<b>3.45pm</b>	<b>Peal of Church bells</b>
4.00pm	Laura Wilson School of Dance
4.30pm	Lee Mackenzie
5.00pm	Hermitage Primary School
5.20pm	Laura Wilson School of Dance – secondary age display
5.40pm	Holmes Chapel Primary School
6.00pm	Holmes Chapel Community Choir

## SANTA SLEIGH DATES



The Santa Sleigh run is organised and managed by the Holmes Chapel Partnership, but we are supported by many different groups within our community who bring the sleigh to different estates each night. Please see the listing below to find out what night Santa will be coming near to your house. If you want to know exactly where the sleigh is on any of the nights listed, you can now Track Santa. Just text to: 07933 617016 sending the message G123456#. If you are out or have no cash when we call you can now donate on our justgiving/ crowdfunding/hcsantasleigh.

1 <sup>st</sup>	Sunday	Christmas Market See Santa between 4 - 7pm	Holmes Chapel Partnership
2 <sup>nd</sup>	Monday	N/A	
3 <sup>rd</sup>	Tuesday	Cotton Hall Est + Lakes Estate (Please track Santa his sleigh cannot reach all houses on your estate, So come and meet him)	Bridge The Gap
4 <sup>th</sup>	Wednesday	Goostrey West Main Road both sides from Long Shoot ,Hermitage Lane, New Platt Lane, Boothbed Lane, Forest Ave, Mulberry Avenue and others.	Goostrey Scouts
5 <sup>th</sup>	Thursday	Goostrey East Main Road North side, Mill Lane, Woodlands, Buckbean Way, Brooklands Drive etc, Station Road, Main Road South side to Long Shoot	Goostrey Scouts
6 <sup>th</sup>	Friday	Brereton, Brereton Heath	Brereton Scouts
7 <sup>th</sup>	Saturday	Bluebell Green Estate & Arclid Bluebell Green Estate, then Pulford Road, Flint Close, Malpas Close, John Ford Way in Arclid.	HC Photographic Society
8 <sup>th</sup>	Sunday	N/A	
9 <sup>th</sup>	Monday	Westway, Holmes Chapel Crofters, Middlewich Road, Bessancourt, Brookfield, Chester Road, Westway, The Drive, The Millingfield.	Holmes Chapel Pre-School
10 <sup>th</sup>	Tuesday	Sandiford/London Road, Holmes Chapel Hawthorn Villas, Sandiford Road, Station Road, Bromley Drive, London Road, Alum Drive.	Holmes Chapel Scouts
11 <sup>th</sup>	Wednesday	Bramhall Drive, Holmes Chapel Westmoreland Terrace, Sadlers Close through to Seddon Estate, Bramhall Drive to Ravenscroft and all Closes.	Holmes Chapel Guides
12 <sup>th</sup>	Thursday	West Hermitage & Saltersford Corner. Holmes Chapel Hermitage Drive, Riverside Crescent, Danefield Road, Picton Square, Macclesfield Road, Saltersford Corner.	VESU
13 <sup>th</sup>	Friday	East Hermitage: Elm Drive Estate Elm Drive and all closes, Bridge Farm	Dane Sound Community Radio
14 <sup>th</sup>	Saturday	Santa Parked up for you to visit So if you missed Santa when he came to your estate, this is your chance to see him now!	ALDI Car Park 10am - 2pm
15 <sup>th</sup>	Sunday	N/A	
16 <sup>th</sup>	Monday	Balmoral Drive & Selkirk Selkirk + Balmoral Drive and Closes to Southlands	Tangent
17 <sup>th</sup>	Tuesday	Rivers Estates & Somerford Thatch Close, Severn Way, Dee Avenue, Humber Drive, Eden Grove, Wye Close, Ribble Close on the Rivers Estate and then Lyndale Grove, Rowan Place, Woodpecker Place, Jay Close, Broomfield, Shakerley Place on the Kingfisher Park Somerford.	Holmes Chapel Scouts
18 <sup>th</sup>	Wednesday	Portree, Holmes Chapel Portree Drive and Closes off	41 Club
19 <sup>th</sup>	Thursday	Cranage & Allostock	Holmes Chapel Guides
20 <sup>th</sup>	Friday	Pub Night 1	Sibelco & Holmes Chapel Partnership
21 <sup>st</sup>	Saturday	Pub Night 2	Sibelco & Holmes Chapel Partnership



## REMEMBRANCE SUNDAY 2019



Uniformed organisations, representatives of the public services, schools, groups and voluntary organisations of our village paraded through Holmes Chapel before attending a service of remembrance at St Luke's Church.

Thanks must go to Holmes Chapel branch of the Royal British Legion for organising the parade which was a memorable occasion watched by hundreds of people from our community .

Bringing up the rear of the parade was the Scouts replica of an ambulance from the War.

Do go and visit Holmes Chapel war memorial in the grounds of St Luke's Church. Before Remembrance Sunday our young people had placed poppy painted rocks, today you will be able to see the many poppies and wreaths placed in Remembrance.





## HOLMES CHAPEL MEMORY CAFÉ'S VISIT TO TATTON FARM



Tatton Farm have recently received Heritage Lottery Funding to upgrade the historical Tatton Home Farm. As part of the funding they had to commit to expanding their visitor numbers and making it accessible to people of all physical and mental abilities. Memory Café received a personal invitation, as the farm and especially the 1930s cottage, can be very memorable for many people living with dementia.

Coffee and delicious home-made cake in the barn welcomed the group. The contents of the memory boxes on each table gave us much fun - we laughed remembering our excitement collecting the PG tips cards, we tried our skill at the yo-yos and realised how tiny the print was in the Beano and Jackie comics!

There was lots of chatter and reminiscing as we sat in front of the roaring fire in the cottage.

It was a bright, crisp Autumn day for a lovely stroll around the farm giving us the opportunity to meet the animals and have many memories to bring home.

Memory Café meets on the 1<sup>st</sup> and 3<sup>rd</sup> Wednesdays of the month at Holmes Chapel Methodist Church, 10.00am – 12noon. When there are five Wednesdays in a month, we go off on a trip!

Memory café is great fun, come and see what it is all about or find out more – Tel: 01477 537679

Different activities for December are listed in the Partnership calendar.



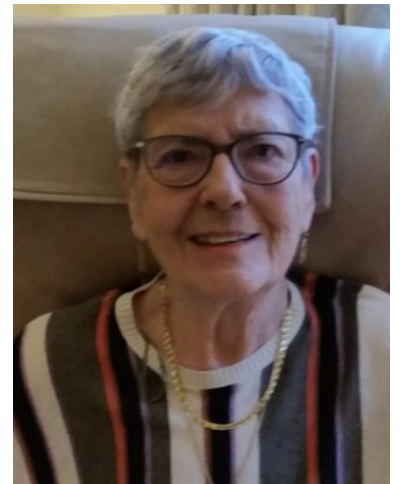


## MEET THE ARTIST

The painting of Holmes Chapel in the snow is signed **Gwenillian** which is her name but she is more often known as Gwen. She has generously allowed Holmes Chapel Partnership to reproduce one of her paintings for our Christmas card and as the Christmas home page for our website.

Gwen and husband Roy Couchman have lived in Holmes Chapel since the late 1970s. A talented artist, Gwen was the founder member of the Goostrey and Holmes Chapel Art Club and for many years its leading light: apart from painting, she arranged not only exhibitions of the Club's impressive output but fun holidays with a cultural slant for Art Club members.

Unfortunately the onset of rheumatoid arthritis a few years ago meant that Gwen feels that she can no longer produce works that she is happy putting her name to, so she gave up painting. Fortunately for us though she has a back catalogue! As her manual dexterity is slowly returning, however, a new generation of Gwen paintings may well be in the offing!



### HOLMES CHAPEL CHRISTIAN AID COFFEE MORNING 2019



A very big thank you to everyone who supported our Coffee Morning at St Luke's Hall on 5th October. You may have seen the quiz on Birds and Ducks which was very popular. Over 200 quizzes were sold, of which 60 were returned, 20 being completely correct. A staff member at the Library drew out our winner, which was Dr Wendy Warr - well done!

Anyone wishing to see a full list of the answers, please call me and I will be happy to email them to you.

Holmes Chapel Christian Aid Ecumenical Committee.  
Contact Caroline Wood 01477 535746

### HCCS ARE 'BRIDGING THE GAP'

**HCCS are 'Bridging the Gap' and inviting members of our community to their production of Grease, followed by soup and sandwich lunch with the cast.**

However we do have to meet the criteria! –

- 'young at heart',
- in need of some company
- finding life challenging and needing a heart lifting experience
- maybe you are none of the above but know of someone who would appreciate this outing and you would be happy to bring them along with you.

**When:** Tuesday 10 December, 10.00am

**Where:** Theatre at HC Comprehensive School

**Tickets:** Free. Tel : 01477 537679

### MEET HOLMES CHAPEL'S NEW VICAR!



Rob is our new vicar or to give him his full title Reverend Canon Robert Ian McLaren. Bishops and Archdeacons gathered on the evening of November 22nd to induct him as "incumbent in the Benefice of Church Hulme" at St Luke's Parish Church. He and wife Jean were welcomed by the Church community. Part of the ceremony was to ring a church bell and Chief Bellringer Mervyn Harrison is already profoundly impressed that Rob

rang the bell unaided! Rob and Jean have already moved into the village so if you see either of them around I am sure they would be delighted if you introduced yourself and made them feel part of our community.



## MAKING YOUR VILLAGE MORE BEAUTIFUL!



Dave Monks of the Holmes Chapel Village Volunteers is just putting the finishing touches to a new bed at the entrance to Bessancourt.

For many years since someone drove into and knocked down the wall this area has been a bit of an eyesore. Let's hope the plants flourish!

If you are interested in making and keeping Holmes Chapel green and beautiful, get in touch with John Clowes (email: [john@johnclowes.co.uk](mailto:john@johnclowes.co.uk)).

## WATERLAND



Wellie manufacturers must have been doing well this autumn! The flooding is not as bad now but the ground is still pretty sodden down by the River Dane.

These pictures were taken on October 26<sup>th</sup> when it seemed like the Dane Valley had become a world of water.





## UK PARLIAMENT WEEK



Given that we have an election scheduled for 12<sup>th</sup> December it seemed entirely appropriate to explore exactly what the UK Parliament is and debate a few current issues with a group of Cub Scouts.

Alison Wright invited members of the Parish Council and the Partnership to take part, so on a chilly evening in November Diane Tams, Michelle Boath from the PC and Peter Whiers and Hazel Sutcliffe from Holmes Chapel Partnership turned up at the Scout Headquarters to join in.

Some of the Cubs were better informed than many adults on the subject of Parliament and were keen to express their views in debate. In the earlier discussion groups the noise level approximated to that in Parliament, but once the room was set up for a "Parliamentary" debate their behaviour and their willingness to listen to one another was impressive (MPs take note!) Michelle Boath took the role of Speaker and summarised the debates very ably.

It is great to see how keen the youngsters are on protecting the environment. They were fully in support of the idea that supermarkets should only sell fruit and veg in biodegradable packaging and were keen to grow their own fruit and veg.

More contentious was the motion that "Homework should be optional" but in the end most were convinced that homework played a useful role in the learning process and should probably not be optional.





## THE DANE MEADOW

### Tree Planting in the Dane Meadow

We have been in touch with the Woodland Trust who are happy to supply us with trees which will be delivered in March. Before then we need to clear some undergrowth in order to be able to plant the trees, which will be bare rooted saplings. If you would like to get involved in the clearing and planting, please get in touch via the website or email [chairman@hccpartnership.org.uk](mailto:chairman@hccpartnership.org.uk).

We are also looking into a labelling system so that those of you who have expressed a wish to sponsor and dedicate a tree will be able to do so. If you haven't yet registered an interest but would like to, Teresa McFarquar is noting names of interested parties so that we can keep you updated of progress – please contact her via the Partnership website.

### New waste bin in the Dane Meadow

Featured in last month's newsletter, the new waste bin by the picnic tables is being well used. We have volunteers to empty it each week – well, a few people kindly allowed their arms to be twisted! They carry the full rubbish sack and leave it by the bin next to the Viewing Platform on Daresbury Close to be collected – so many thanks to them!

Comments so far have all been very positive – people really feel it's making a difference to the amount of litter and the way the Meadow looks.

### Flooded path

With all the rain over the past few weeks the lower path next to the river was flooded on several occasions and had accumulated layers of mud which made it almost impassable.

The Parish Council arranged for Duttons to come and raise the path and resurface it – the result is a brand new section of path, so you won't need your wellies any more!



## LOCAL TALENT

If you follow rowing as a sport – or even if you don't – you will probably know that the profile of the sport in the UK has been greatly increased by the successes of the GB Rowing Team.

Participating in the 2019 World Rowing Championships in Linz, Austria, as part of the GB team were Tom and Emily Ford, brother and sister born and brought up in Holmes Chapel. This event doubled as the main qualification regatta for the Tokyo 2020 Olympic and Paralympic Games. The Netherlands and Great Britain proved to be the most successful in Olympic qualification with both countries securing ten boat classes out of 14 for Tokyo 2020.

A graduate of Newcastle University Tom (28) was first selected for the GB Rowing Team at U23 level in 2013. He raced in the men's eight at the World Rowing U23 Championships in Linz, finishing fifth; the following year he was part of the GB under-23 men's eight, and the gold-medal winning FISU men's eight.

He was invited to train full time with the GB Rowing Team in 2017, taking a place in the men's eight at the first World Cup in Belgrade, winning silver. He stayed with the eight until the third World Cup, where he joined up with fellow Newcastle graduate Tim Clarke in the pair, finishing second. The duo competed in the coxed pair at the World Championships in Sarasota-Bradenton, where they finished fourth.

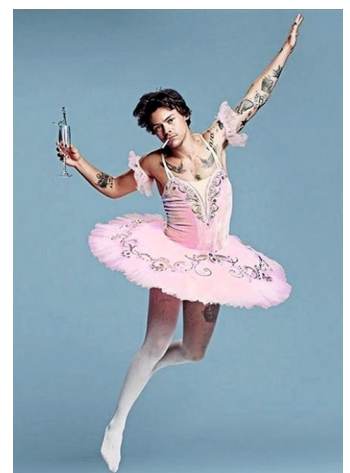


Emily (23) won successive medals at the World U23 Championships in 2015 and 2016 – a bronze in the four in the former and a silver in the eight at the latter. After university she joined Leander Club to train full-time and broke into the GB Rowing Team senior squad in 2018. She has been part of the women's four for the 2019 season, competing successfully in the European Championships, the World Cup II in Poznan and the World Rowing Cup III in Rotterdam.

Tom and Emily both have their sights set on the Tokyo Olympics let's hope that their hard work and dedication to the sport will be rewarded. Watch this space!

### And talking of local talent ....

I am not sure what the customers and staff in Mandeville's would make of Harry Styles' latest outfit!





## HOLMES CHAPEL RUFC MONTHLY UPDATE



The Club's mixed season continues, with the 1s narrowly losing to Anselmians 2 (0-5) before beating northwich 2 (26-14). The 2s have been unable to play recently due to the weather. Training will continue on at 7pm at the Community Centre throughout the season.

### Forthcoming Fixtures

Date	1st Team	2nd Team
30 November	Crewe & Nantwich 2 (H)	Altrincham Kersal 3 (A)
7 December	Lymm 3 (A)	Heaton Moor 3 (H)
14 December	Liverpool St Helens 2 (H)	Newcastle (Staffs) 3 (A)
21 December		Broughton 2 (H)

All home fixtures are at Holmes Chapel Community Centre and kick off at 2.15.

Holmes Chapel Rugby Club is always looking for new players.

They continue to go from strength to strength but they are looking to build for the future now. If you or anyone you know fancies joining the club then please get in touch with them via:

<http://www.pitchero.com/clubs/holmeschapel>

<https://www.facebook.com/HolmesChapelRufc>

## HOLMES CHAPEL LIBRARY EVENTS



**Mondays** - Meditation - 2nd Dec (last meeting of the year) 7.30 – 9.30pm

**Tuesdays** - My Baby Time - 3rd, 10th, 17th Dec 10am – 11am

Lip Reading - 10th, 17th Dec 2-4pm Reading Group - 3rd & 17th Dec 2-3pm Free

Bridge the Gap Song and Rhyme – 10th Dec 1.30pm – 2.15pm. Free.

**Wednesdays** - Stay and play - weekly, 9.30am – 11am. (last session before Christmas 18th Dec)

**Thursdays** - Library Rhyme time - weekly during term time 11am – 11.30am. Free.

My Baby Time - weekly, 1.15pm – 2.15pm (last session before Christmas 19th Dec)

Camera Club - Thursday 5th & 19th Dec 8pm-10pm

**Fridays** - Reading Group - weekly, 2pm-3.30pm. Free. No need to book.

Work Club – 20th Dec 10am-12pm. Free

**Saturdays** - Lego Club – 14th Dec 10.30am -11.30am. Free

# WHAT'S ON



**HOLMES CHAPEL  
MUSIC SOCIETY**



**8pm 7th December 2019**

***Apollo5***  
(Vocal Quintet)

"A stunning, beautiful sound"  
- BBC Radio 2

**8pm 11th January 2020**

***Jennifer Pike*** (Violin)  
and  
***Martin Roscoe*** (Piano)

"Simply spectacular" - The Independent



**Concerts are held at Holmes Chapel Leisure Centre**

**Tickets £17, Members £11, Children (under 16), Students and Benefit Claimants £1**  
From The Print Room, 5 Church Walk, Holmes Chapel or Mrs Jane Perrins (01477 537 769)

Tickets and Full details at **[www.themusicociety.org.uk](http://www.themusicociety.org.uk)**

*The Society retains the right to change the programmes without notice*

Holmes Chapel Local Committee

## BRIDGE DRIVE

at

**The Victoria Club**

**Friday December 6<sup>th</sup> 2019**



**2.00pm**



**Tickets £7** (incl. afternoon tea)  
Tel: 01477 537589

**Prizes and Raffle**

[www.cruk.org](http://www.cruk.org)

Cancer Research UK is a registered charity in England and Wales (1059464), Scotland (SC041666) and the Isle of Man (1103). Northern Ireland charity registration pending.

PS001UK



REGISTERED WITH  
FINANCIAL REPORTING  
REGULATOR



## HOLMES CHAPEL CHORUS CHRISTMAS CONCERT 'CELEBRATE THE CHILD'

Holmes Chapel Chorus will again be visiting St Luke's this year for our Christmas Concert - 'Celebrate the Child' - on **Friday December 20<sup>th</sup> at 7.30 pm.**

Under the baton of Musical Director, Julie Barker, the concert will be a mixture of traditional and modern items – with carols for all to join in and sing – and also items from our friends 'Cheshire Brass'

Everyone is very warmly invited to start off their Christmas with this evening of 'Christmas Celebration' – and then to join the Chorus for refreshments in the Church Hall afterwards. The Concert, this year, will be in aid of Mid-Cheshire Hospital's charity 'Everybody knows Somebody' dementia appeal – which ties in so well with Holmes Chapel being a 'Dementia friendly village'.

We look forward to seeing you. The Chorus are always looking for new members and you may be inspired to join us!



## WHAT'S ON

### Champagne: The Drink Divine

**Lecture by Charles Hajdamach**

**Wednesday 11 December 2019, 7.30pm – 9.30pm**  
**New Theatre, Holmes Chapel Comprehensive**



Champagne is more than a drink, it is an institution. It all started with Dom Perignon's famous remark, "Come quickly! I am tasting stars". Charles Hajdamach is a former Director of Broadfield House Glass Museum (1974-2003) and one of the top authorities on glass in the country. Free for members. Guests are welcome £8, includes refreshments.

For more information:

Phone: 07856 721087

Email: [danevalley@theartsociety.org](mailto:danevalley@theartsociety.org)

Web: <https://theartsociety.org/dane-valley>



The next film is: **Judy** on 5 December 8pm - Tickets £5  
Available from Holmes Chapel Community Centre or Holmes Gifts & Interiors on Church Walk.

The January film will be *The Good Liar* on January 16 starring Helen Mirren. Tickets for this performance will be on sale after 7 December.

**A Merry Christmas to all from the cinema committee.**



# CALENDAR OF EVENTS

DECEMBER 2019				
<b>Sun 1</b>	<b>4 -7pm</b>	<b>Holmes Chapel Partnership</b>	<b>Holmes Chapel Christmas Market</b>	<b>Coop Carpark</b>
Tue 3	2 - 4pm	Church Hulme Ladies Probus	Monthly Meeting	Cranage Village Hall
Tue 3	2pm	HC & District Mens Probus	Monthly Meeting	Methodist Church Hall
Tue 3	7:30 - 9pm	Holmes Chapel Women's Institute	Christmas Party	St Luke's Church Hall
<b>Tue 3</b>	<b>Start 5.30pm</b>	<b>Holmes Chapel Partnership</b>	<b>Santa starts touring on his sleigh</b>	
Wed 4	10am	Memory Cafe	Christmas outing: coffee, cakes and shopping	Goostrey Home & Leisure
Wed 4	2pm	Church Hulme Men's Probus	Monthly Meeting	St Luke's Church Hall
Thu 5	8pm	HC Community Cinema	Film: <b>Judy</b>	Holmes Chapel Community Centre
Fri 6	2pm	Cancer Research UK	Bridge Drive	Victoria Club
Fri 6	6-8pm	Methodist Church	Journey to the First Christmas	Methodist Church
Sat 7	9.30am - 2pm	Methodist Church	Journey to the First Christmas	Methodist Church
Sat 7	8pm	Holmes Chapel Music Society	Concert: Apollo 5 (Vocal Quintet)	Holmes Chapel Leisure Centre
Tue 10	10am	HCCS	Silver screen performance of <i>Grease</i>	HCCS
Tue 10	10am	Friends of Dane Meadow	Work session	Dane Meadow
Wed 11	2 - 3:30 pm	St Luke's Mother's Union	Christmas meeting Carols and Readings	St Luke's Church Hall
Fri 13	7.30pm	Methodist Church	Christmas Concert	Methodist Church
Wed 18	2pm	Memory Cafe and friends	Christmas Sing Along	Methodist Church
Fri 20	7.30pm	Holmes Chapel Chorus	Concert: Celebrate the Child	St Luke's Church
Tue 24	4.30pm	Methodist Church	Crib Service	Methodist Church
Tue 24	6-7pm	Everyone!	Community Carol Singing	George & Dragon Terrace

## WHERE CAN I GO TODAY?

Remember to look for suggestions on the Partnership notice board which is attached to the outside library wall.

**HEADS UP !** The copy deadline for our next issue is 13th December as we will be busy with our Christmas presents on the 25th!