



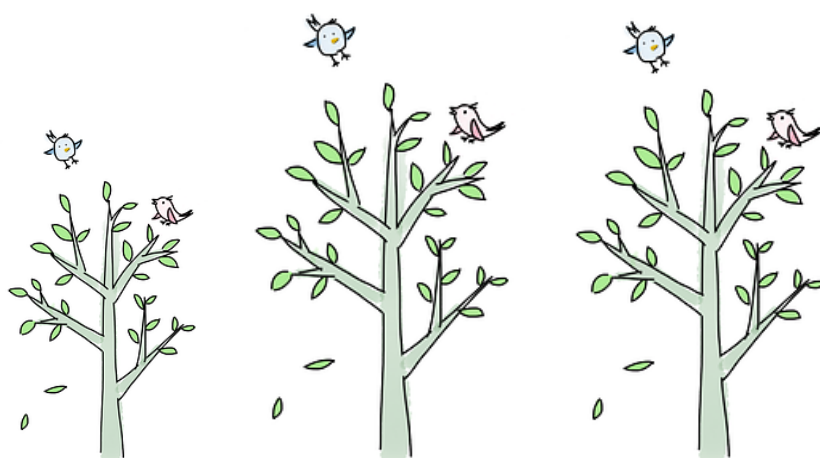
Holmes Chapel Partnership Community Newsletter

Issue 67: March 2020

TREE PLANTING IN THE DANE MEADOW

Saturday March 21st

Come and join us and do your bit for the planet – we have volunteers already but the more the merrier, many hands make light work and all that!



The trees will not be big and they will be bare rooted, so it won't be a case of digging a big hole for each tree - just a slit in the earth to tuck the roots into.

A spade would be useful for this if you have one, if not I have a few to spare.



We will meet at the picnic tables down in the Dane Meadow at 10am.

Contact me via the website (www.hcpartnership.org.uk) If you want more information.

Email hazel.sutcliffe@hcpartnership.org.uk or phone/text 07884211859

Hazel Sutcliffe (Chair HCP and Friends of Dane Meadow)

SPOTLIGHT ON... Sports for Youngsters



Holmes Chapel Leisure Centre is run by Everybody Sport and Recreation and can be found nestled within the grounds of the village's High School on Selkirk Drive. In case you haven't been down to the centre in a while, we thought we'd let you know what we have going on!

Our Facilities

We have a whole host of facilities, including: Sports Hall, Small Hall, Outdoor Tennis Courts, Fitness Studio and an all-weather 3G Football Pitch. These facilities support us in hosting lots of children's parties, from Bubble Football to Bouncy Castle frenzies, and special events such as Ballroom Dancing Competitions, Badminton Tournaments and more. If you've ever attended a Music Society event, you'll have also enjoyed our special bar service, serviced by our friendly staff, and seen how transformable our spacious halls can be!

A Community Hub for Sports

At our Leisure Centre, we're proud to be home to a number of regular bookings that use us as a hub for their communities to gather, get some fresh air, stretch their legs and unwind.

The Karate Club is a great example of this, as they've used us as their base for an impressive 20 years or so now! Over this time, we've enjoyed watching their students improve and gain in confidence – from timid beginners to accomplished students that have attained high grades with the club. With Karate being featured for the first time in the Olympics this year, we're eager to see whether we will see any local faces compete for our country in the future!

Instructor, Karl Barlow, says: "Karate is much more than a martial art for self defence. It is an enjoyable sport and a great way to build strength and fitness with all the benefits that self improvement brings. It's great to see students grow... I hope we are able to continue training at HCLC for many more years to come!"

We're also proud to host the **Holmes Chapel Hurricanes**. They are our local football team and the dedicated coaches are developing our young talent; teaching young people teamwork, fancy footwork and the importance of fitness. They also have an adults team comprised of those who have grown up in the Hurricanes and still love to play. It's fantastic to see those who used to attend as children themselves acting as role models to the younger attendees.

SPOTLIGHT ON...Sports for Youngsters

We spoke to Ian Wilkes, who oversees a lot of the Holmes Chapel Hurricanes and asked him a few questions. This is what he had to say.

Why you do it?

'To give our local young people a chance to play and enjoy football with a view to developing a life long love of the game, and keeping fit in general.'

How much has it grown in the last few years?

'7 years ago we had 7 teams in the club, we now have 26 teams including 3 Girls Teams, an Open Age team, a Veterans team and, from next season, a Walking Football team! We have multiple teams in virtually every age group now from U8's to U16's, whereas previously it was only 1 team per age group, with some not represented at all. '

What are the plans for the future?

'To continue to develop the Club to give even more local boys and girls, and adults (with the possibility of a Women's team to come as well) the chance to participate in football for their local community club. Ideally, we would love to have another 3G facility in the village as we struggle for both training and match pitches (especially for our 9-a-side squads) with the Leisure Centre 3G and hiring grass pitches from the local schools and Council, and this is our primary aim – will take a lot of hard work and funding!'

Sharing the Benefits of a Healthy Lifestyle

The Everybody Foundation is a charity (Registered charity No. 1174873) that raises funds to support individuals and groups to promote a healthy and active lifestyle. We're proud to contribute with fundraising efforts that promote a happier, healthier lifestyle; our staff have completed the Three Peaks Challenge as well as participating in a number of fitness challenges, such as Tough Mudder.

Discover more

We would love to show you around our centre; why not come and have a little look around and see what we can offer you? You'll also be able to check out our latest reception refurbishment – we're very proud of it as the funding has enabled us to become more accessible and open to the whole community.

Come and use one of our centres for FREE with this 1-day guest pass!

<https://everybody.org.uk/1-day-pass/>

Contact us

Manager: Jade Stone

Holmes Chapel Leisure Centre, Selkirk Drive, Holmes Chapel, CW4 7DZ.

hclc@everybody.org.uk

01477 689557

PARTNERSHIP PROJECT OFFICER BLOG - March



What started as a project to look at the provision of a Youth Shelter in Holmes Chapel has now progressed to the point where we are looking at a wider need within the village. The Youth Council survey informed us on where and when the youth in the village would be most likely to use a shelter, which was in the Precinct and at the Community Centre, which they would use after school, in the holidays and at weekends.

The provision of a 'Youth Shelter' in the Precinct would be expensive and controversial, so I believe a compromise solution is what we need. If we consider the needs of the village more widely, it is true to say that we have no central meeting point where a group of friends can sit and have a chat. I have lived in the village for over 30 years now and have met 'at the Precinct' on many occasions as a starting point for some form of activity. I believe the provision of an attractive landscaped meeting point with seating for up to a dozen people, would meet the needs of our youth, families and the not so youthful (particularly during school hours).



In regard to provision at the Community Centre, I was interested to see that someone posted on Facebook last week that Holmes Chapel needs a skatepark.

Thankfully it was kindly pointed out that we already have one at the Community Centre. This was in fact a joint project between the Parish Council and the Holmes Chapel Partnership, opened in April 2017. However, if you have ever visited the skatepark, you will know that it is located in an area with no shelter from the elements. To respond to the need identified in the Youth Council survey and the Holmes Chapel Neighbourhood plan, a Youth Shelter adjacent to the skatepark would I believe, make a visit to the skatepark for an hour or two much more attractive.

Peter Whiers

Project Officer, Holmes Chapel Partnership.

(m) 07973 622363 Projects@hcppartnership.org.uk



Would You like an Allotment?

If you would you like to rent an allotment please let me know. The Partnership is currently looking for suitable land in and around Holmes Chapel, that could be converted into allotments. Equally, if you have land that might be suitable for this use please contact me by e-mail or mobile details above.

HOLMES CHAPEL RAILWAY STATION We have an Amazon Locker!



The Amazon Locker by the booking office at Holmes Chapel Railway Station. There are now three places in Holmes Chapel where you can collect your Amazon parcels - Holmes Chapel Post Office, The Co-operative Food and Petrol Station on Middlewich Road and now at Holmes Chapel Railway Station.

The Railway Station Amazon Locker appears to be the only one which is available 24 hours a day, 7 days a week. (Amazon lists 7 days a week 06:30 to 22:30 for click and collect at the petrol

station). Having one of the most advanced fulfilment networks in the world, Amazon; store, pick, pack, deliver and provide customer service from an array of fulfilment centres. Amazon has 23 fulfilment centres in the UK (part of a total of 175 across Europe). MAN 1 was the first Fulfilment Centre (FC) in Manchester.

Tony Wright
Friends of Holmes Chapel Station

A Note from the Editor



Which is going to last longer?

The lockers or the station building itself?

VE DAY

Preparations are underway for commemorating VE Day on 8th May 2020. These plans include a music concert at the Methodist Church in the morning, followed by a gathering and toast by the War Memorial at 2.45pm. The day will conclude at the War Memorial at 6.55pm with a 'Cry for Peace' performed by a Town Cryer. We are also hoping to host a 'Peace in Europe' event and are looking for organisations to run a stall, with family friendly activities, food, drink or anything they wish to do. A programme will be published through the Parish Council website.



The local Churches are coming together for a special service at the Holmes Chapel Leisure Centre on Sunday 10th May at 10.30am. All are welcome to attend.



In the weeks leading up to VE Day, the village will be decorated, shop windows dressed and a historic walking guide and WW2 display produced. The Parish Council is grateful to all the volunteers on the Planning Group, who are working tirelessly behind the scenes to help make this weekend one that is special and memorable for the whole village.

If you would like to get involved especially with the music concert or 'Peace in Europe' afternoon or need further information, please contact the Parish Office: clerk@holmeschapelparishcouncil.gov.uk or call 01477 533 934

ANNUAL PARISH MEETING

The Annual Parish meeting of Holmes Chapel Parish Council is on Tuesday 17th March 2020 at 7pm. It will be in the Brooklands Suite of the Community Centre. This is a great opportunity for you to come along, meet your local Parish Councillors and hear about some of the many projects the Parish Council is involved with.

We hope to see you there!

DANE SOUND HERO AWARD WINNERS

The Awards – in it's second year, recognises local people who have made a positive impact on the local community. Here are the winners and what their nominees said about them.



YOUNG HERO AWARD - BELLA MAC

Bella, a sixth former at Holmes Chapel Comprehensive is involved in many community projects. She has raised £500 for MacMillan through the NCS Scheme, raised awareness of environmental issues and is the Chair of Holmes Chapel Youth Council. She is an inspiration and a great role model, and has made a huge difference to our local community.



INDIVIDUAL HERO AWARD - MARTINE NICHOLSON

Martine volunteers with the Toy Appeal and puts together the Christmas sacks for the children with special needs to ensure they have a sack of toys they can really enjoy. The Toy Appeal would be lost without her. Martine also plays a major part in helping with the Goostrey Rose Festival, and over the years has volunteered for Goostrey Girl Guiding and the Pre-School."



HERO AWARD FOR OUTSTANDING CONTRIBUTION

JESS WILLIAMS & THE WILLIAMS FAMILY – part of Team Robster

Jessica's dad was diagnosed with an incurable brain tumour. Since then Jess and her family have raised over £32,000 for the Brain Tumour charity with charity walks, marathons and cake sales. The Great North Run is planned for later this year. The family are determined to help others, in memory of Rob.



COMMUNITY HERO THE PEOPLE'S CHOICE - ALISON WRIGHT

Alison is constantly active in the community with boundless enthusiasm. She has been involved with Cubs & Scouting in general for many years, has run the Scout's Christmas Post, and has been instrumental in connecting groups within Holmes Chapel, including volunteering for Bridge the Gap. She is an absolute lynch pin in the community, and we are all richer in spirit for her contribution.



UNSUNG HERO AWARD - MIKE STREET

Mike, a Parish Councillor, goes the extra mile with everything he is involved in - playparks, railways, residents, he is often found putting up poppies, Christmas trees, mending benches, checking park equipment and interacting with local groups all outside his remit. He is one of the kindest, knowledgeable, reliable, helpful and thoughtful people - year after year, quietly unnoticed, making the village a better place."

PCSO UPDATE

Hello, I am your local community support officer for Dane Valley – PCSO Liz Chesters



We have recently been increasing our patrols in the area when it comes to road safety. This has included monitoring the parking outside schools and in the villages and also targeting roads where speeding is an issue. The weather we have experienced over the last few weeks has meant that the road conditions have been extremely poor – this means it's even more important to check you are driving appropriately for the conditions. Do complete your car checks before leaving the house.

Your local community support officers have also been working with Crewe Exploitation team to visit local haulage companies who were given advice and information on Clandestine entry and how to reduce acquisitive crime. This was a national campaign working alongside the Home Office where we look to develop our relationship with these companies in the local area in order to raise awareness of these issues.

During last month I also had the chance to be guest speaker for Holmes Chapel Mothers Union. This was a great opportunity to meet with a local group and explain what we do as community support officers and the type of crime we are seeing in the area. Thank you to the all of the lovely ladies for a warm welcome. Do you have a group that you would like us to be involved with or be a guest speaker for? Please get in touch via the contact details below!

Once a week, every week we also hold a local community meeting in Holmes Chapel for an hour where I will be available. This is an opportunity for the public to come and have a chat to us and the dates can be found here - <https://www.cheshire.police.uk/local-policing/crewe/dane-valley/>. Alternatively the dates are also posted outside of Holmes Chapel Community Centre, Station Road.

If you are interested in more of our activity, please follow us on social media where we are able to speak directly to you as our community about incidents and crimes we are finding in the area. You can also contact us via Crewe.LPU@Cheshire.pnn.police.uk. Please like our Facebook page 'Dane Valley Police' or follow our Twitter account '@DaneValleyPol'.

Liz Chesters

HOLMES CHAPEL RUFC MONTHLY UPDATE



The Club's results have finally turned for the better, with the first team continuing their unbeaten run with wins over Manchester 2 (21-17), Widnes 2 (52-17). In the meantime, the 2nd team have beaten Broughton 2 (49-15), Aldwininans 3 (17-12) while suffering losses to Broughton Park 3 (walkover) and North Manchester 2 (24-40). Training will continue on Tuesday @ 7pm at the Community Centre throughout the season. **Forthcoming fixtures:**

Date	1st Team	2nd Team
29 February	Anselmians 2 (H)	Manchester 3 (A)
7 March	Northwich 2 (A)	
14 March	Altrincham Kersal 2 (H)	Oldham 3 (A)
21 March	Crewe & Nantwich 2 (H)	Altrincham Kersal 3 (H)
28 March	Lymm 3 (H)	Heaton Moor 3 (H)

All home fixtures are at Holmes Chapel Community Centre and kick off at 2.15 (subject to weather). Some games may be switched to Back Lane Playing Fields in Congleton. Please check the website for any changes. Holmes Chapel Rugby Club is always looking for new players. They continue to go from strength to strength but they are looking to build for the future now. If you or anyone you know fancies joining the club then please get in touch with them via:

<https://www.hcrufc.com/>

<https://www.facebook.com/>

AN EVENT FOR OUR EVENT CO-ORDINATOR!



Holmes Chapel Partnerships Event Co-ordinator Dorothy Davidson has been invited to one of the most important events of the year on the social calendar – the Buckingham Palace Garden Party! Dorothy is the mover and shaker behind so much that happens in this village and fully deserves the accolade. She will no doubt

appreciate being merely a guest for a change instead of being responsible for organising the event. We wish Dorothy and husband Alec a memorable day out in London and ask only that they take some pictures and report back to us on their experience.



SHOPPING IN HOLMES CHAPEL IN 1968

Most of the shops are concentrated on the western side of London Rd, extending from the George & Dragon to the Good Companions Hotel¹ in the south. A few shops also exist along Macclesfield Rd and, of course, twelve units in the new shopping centre². There are twenty two shops plus a Post Office, two banks, four Hotels/Public Houses, two Estate Agents and one Optician.

These are categorised as follows:

1 Agricultural Engineer/Hardware	1 Children's Clothes
1 Hardware/Electrical/Shoes	1 Clothes (general)
1 Calor Gas Appliance	2 Confectioners
1 Fish & Chips	1 Children's Toys
1 Chemist	3 Filling Stations/Garages
2 Butchers	1 Plumber/Decorators/Glazer's Materials
5 Grocers	1 Launderette
1 Grocer/Greengrocer	2 Radio/TV/Electrical
1 Gents' Hairdresser	1 Stationery/Newsagent
1 Ladies' Hairdresser	
2 Ladies Clothes	

About 92% of all households in the village, shop there once or twice a week. A large number of these (about 25%) shop in the village 6 times a week. As may be expected, Crewe is a popular shopping centre outside the village, with about 50% of households visiting it at least once a week with Sandbach, Wilmslow and Congleton, in that order of popularity, following."

¹ Lovell Court now occupies the site

² The Precinct

This is the pre-supermarket era but Holmes Chapel residents could buy pretty much everything they needed in the village 50 years ago – albeit with limited choice (unless you're talking grocery shops!). We now have a massive choice of hairdressers, several places to eat out and two opticians rather than one. What conclusions can we draw from that?

You may wonder at the lack of a bakery since Mandeville's was most certainly around in 1968 and did bake bread and cakes but it has been classed as a grocery because the majority of the space in the shop was taken up with general foodstuffs. Morrey's was also there and classified as "Hardware, Electrical, Shoes" whilst Sam Dale's was "Agricultural Engineer/Hardware".

How times change. If you look at Shopping in Holmes Chapel on Trip Advisor today it looks a bleak picture - not a single shop comes up!

Holmes Chapel Village Plant Sale

Raising funds for the Viking Explorer Scout Unit

Top Quality

Locally Grown



Last Order Date 4th April 2020

NO MINIMUM ORDER

Plants available for Collection or Delivery on Saturday 2nd May 2020

Orange Order Forms are being delivered to Holmes Chapel and surrounding areas mid March.
Extra forms are available from The Print Room or download from www.vesu.org.uk

Drop your completed form and payment into one of our Orange Post Boxes at
The Co-op, Holmes Chapel Library or The Print Room

Please support the Holmes Chapel Plant Sale which is raising vital funds for the Viking Explorer Scout Unit, Order forms will be delivered to homes in the area mid March.



CHOCOLATE MORNING

Very many thanks to everyone who donated

Chocolate and to those who supported our Annual Chocolate Morning on 1st February. This year it was again headed by NSPCC and was hugely successful in raising over £825.00 for Childrens' Charities, including Junior Diabetes Research Fund, Cystic Fibrosis and Downs Syndrome. More worthy charities benefited.

Since this was such a successful event we will repeat next year!! Look out for our notices in January 2021.

Pat MacMaster



HOUSING WELLBEING SERVICE

The housing wellbeing service supports people with hoarding tendencies to reach their goals, increase well-being and make their home safer.

We provide one to one support to help people who are hoarding to develop the skills to manage their possessions more effectively, supporting them to declutter, sort and dispose of excess and unwanted items, and develop a sustainable plan to maintain their home environment in the future.

We can support individuals where:

- There is a risk of homelessness; engagement has taken place but not successful and the tenancy is now at risk; or
- Support is required to enable contractors to move around the home to carry out essential repair and/or adaptations; or
- A care package cannot be put in place, or the person cannot be discharged from hospital or care; or
- A fire risk assessment has confirmed significant risks due to hoarding at level 7 or above on the clutter image rating scale.

For more information and to make a referral contact Stephanie Durber, Housing Wellbeing Officer on (0300) 123 5017 option 4 or email: PrivateHousing@cheshireeast.gov.uk

WHAT'S ON

The World's Most Expensive Art



A talk by Ian Swankie

In the last few years the combined price paid for the dozen most expensive artworks is about the same as the cost of building three large public hospitals.

This talk is not about the excesses of the top end of the over-heated art market, but an excuse to examine some beautiful and varied art.

Where & When

New Lecture Theatre, Holmes Chapel Comprehensive School
Wednesday, 11 March 2020, at 7:30pm | Guests £8



E-mail: danevalley@theartsociety.org | Tel: 07856 721087 | Web: www.theartsocietydanevalley.org

CHRISTIAN AID- Home-Made Soup Lunches and Recitals

Soup Lunch - homemade soups, bread, biscuits or fresh fruit and tea or coffee served **12- 1pm**
Weekly for 6 Fridays of Lent - from 28th Feb to 3rd April 2020

St Luke's Church Hall, Holmes Chapel Pay on the door - **£4.50 per person**

For many years now, Holmes Chapel Christian Aid Committee has organised a home-made soup lunch during Lent. Last year we raised in excess of £1500 to help those in great need around the world.

You would be most welcome to come along and join us for a light lunch and friendly conversation on any Friday during Lent.

There will be hand- made cards on sale on Friday 6th and 20th March.
Any queries- please contact Caroline Wood on 01477 535746

The soup lunches will be followed by a lunchtime recital in St Luke's Church in aid of Christian Aid:

CHRISTIAN AID - LUNCHTIME RECITALS (in St Luke's Church, Holmes Chapel) 1.15pm ~ 1.55pm

28 th February	'Slipper Band' – contemporary folk band
6 th March	Organ - Peter Cotton
13 th March	Community Choir – singing some favourite songs
20 th March	Organ - Wendy Macdonald
27 th March	'Strings Attached' (music for violins with accompaniment)
3 rd April	Organ - Stephen Haigh

A warm welcome to any or all of these recitals
Entry free with retiring collection for Christian Aid



WHAT'S ON

Dane Sound's Got Talent

Saturday 28th March

The Victoria Club

Auditions 10am - Noon - Live Final evening

CATEGORIES

DANCERS ACTORS CHOIRS

SINGERS (ADULT SOLO) SINGERS (UNDER 18 SOLO)

SINGERS (GROUPS) SOLO MUSICIANS

ENTERTAINERS: MAGICIANS, COMEDIANS, UNIQUE ACTS

TO APPLY CONTACT

**Email contact@daneshound.com
or Text 07789 134 128**



**Listen to your local community radio station at
www.daneshound.com**

Sponsored By:



We had a very successful evening on 20th February when we showed Little Women. 143 people came.

The next film is: **1917**

Certificate 15

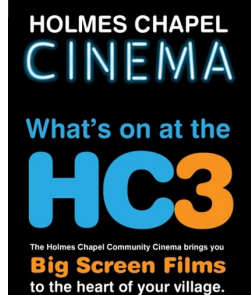
Tickets £5

Thursday 19th March, 8pm

Holmes Chapel Community Centre

Tickets available from the Community Centre or Holmes Gifts & Interiors, Church Walk.

April's Film will be **Military Wives**



CALENDAR OF EVENTS

MARCH 2020

Wed 4	10am -12	Methodist Church	Memory Café: coffee morning and activities	Methodist Church
Thurs 5	7pm	HC Parish Council	Amenities Committee	HC Community Centre
Fri 6	1.15-1.55pm	Christian Aid	Home made Soup lunch & recital: Peter Cotton (organ)	St Luke's Church Hall
Tues 10	10 – 11.30	Friends of Dane Meadow	Work session	Picnic tables, Dane Meadow
Wed 11	10 – 11.30	Bridge the Gap	Coffee and activities with the children	Hermitage Primary School
Wed 11	7.30pm	The Arts Society Dane Valley	The World's Most Expensive Art	HC Comprehensive: Theatre
Thurs 12	10am	U3A	From Toytown to Buckingham Palace – John Stirling	Methodist Church
Thurs 12	7pm	HC Parish Council	Strategy & Finance	HC Community Centre
Fri 13	1.15-1.55pm	Christian Aid	Home made Soup lunch & recital: Community Choir	St Luke's Church Hall
Sat 14	2.15pm	HCRUFC	1st team v Altrincham Kersel 2	HC Community Centre
Tues 17	7pm	HC Parish Council	Annual Parish Meeting	HC Community Centre
Wed 18	10am -12	Methodist Church	Memory Café: coffee morning and activities	Methodist Church
Thurs 19	8pm	Community Cinema	Film: 2017	HC Community Centre
Fri 20	1.15-1.55pm	Christian Aid	Home made Soup lunch & recital: Wendy Macdonald (organ)	St Luke's Church Hall
Sat 21	10 am	HC Partnership	Tree planting	Dane Meadow
Sat 21	2.15pm	HCRUFC	1 st team v Crewe & Nantwich 2 nd team v Altrincham Kersel 3	HC Community Centre
Tues 24	7.30pm	WI	90 th Birthday Celebrations	St Luke's Church Hall
Fri 27	1.15-1.55pm	Christian Aid	Home made Soup lunch & recital: 'Strings Attached'	St Luke's Church Hall
Fri 27	2-4pm	HC Partnership	Tea Dance	HC Community Centre
Sat 28	2.15pm 10am-12	HCRUFC Dane Sounds Got Talent	1 st team v Lymm 3 2 nd team v Heaton Moor 3 Auditions	HC Community Centre Victoria Club

WHERE CAN I GO TODAY?

Remember to look for suggestions on the Partnership notice board which is attached to the outside library wall.